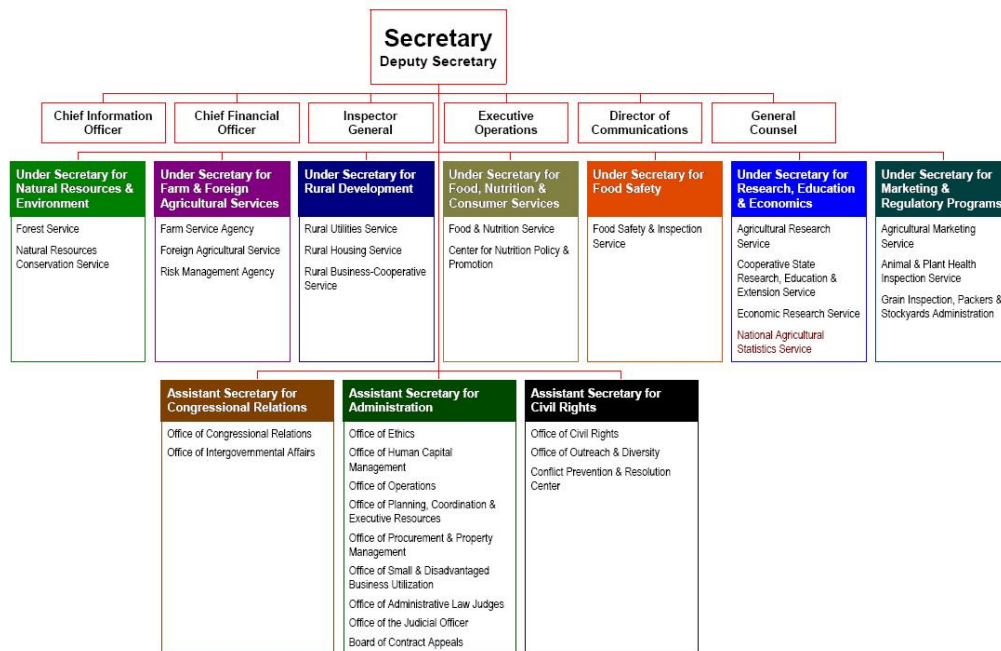




# Overview of NASS Operations

Bob Hale  
 International Programs Office  
 National Agricultural Statistics Service, USDA  
 April 20, 2010

## United States Department of Agriculture





# National Agricultural Statistics Service

Headquarters in Washington D.C.

46 field offices  
serving 50 states & Puerto Rico

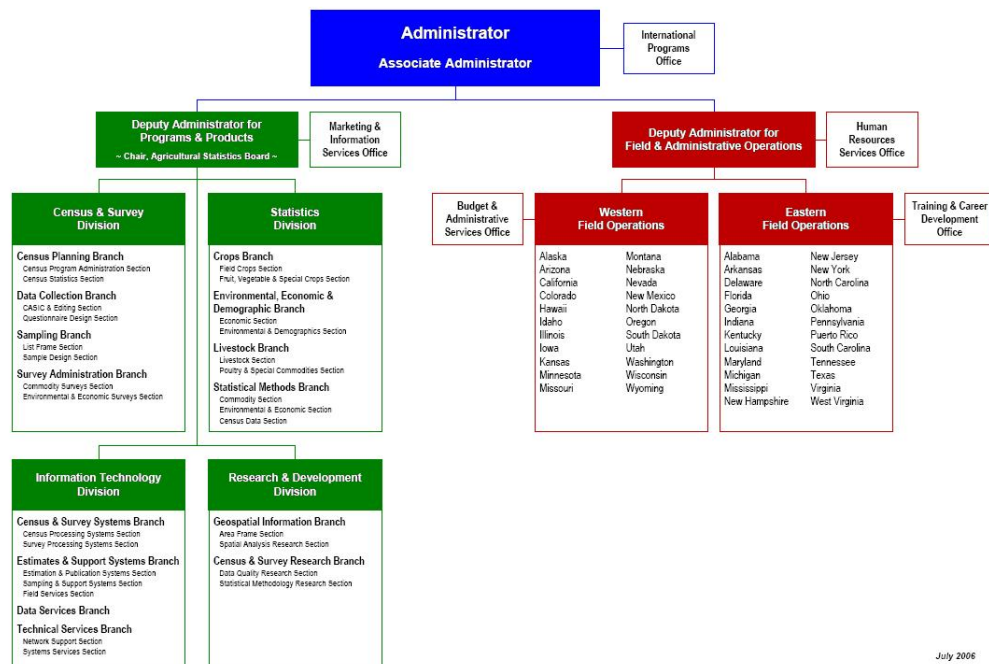
1100 Federal employees

160 State employees

3500 contract employees



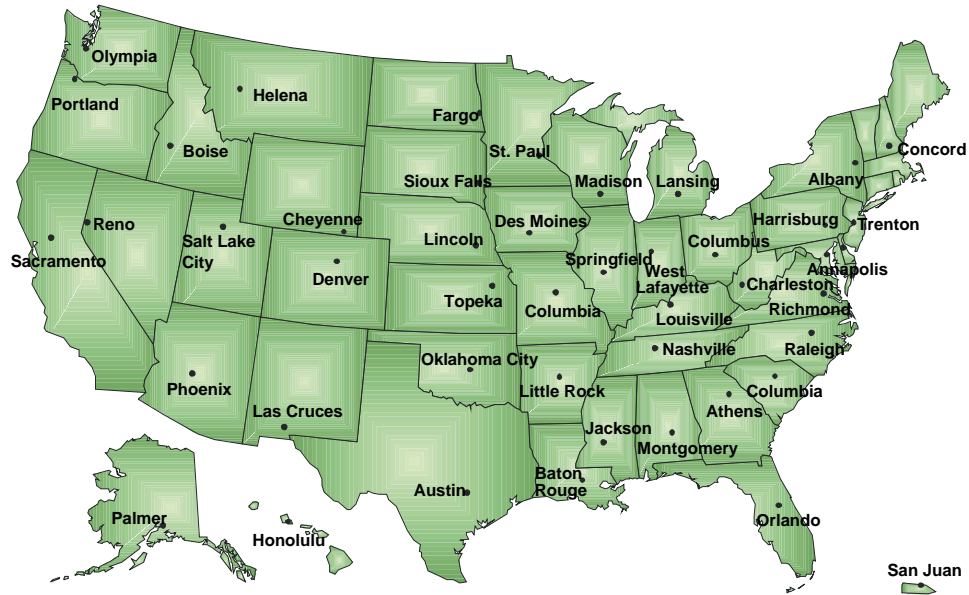
# National Agricultural Statistics Service





## National Agricultural Statistics Service

### *NASS Field Offices*



## National Agricultural Statistics Service

### **The statistical survey agency of the U.S. Department of Agriculture**

non-political,  
non-policy making  
independent-objective-unbiased  
appraisers of U.S. agriculture

**Mission:**  
*to provide  
timely, accurate and useful statistics  
in service to U.S. agriculture*



## Responsibilities

### Administer USDA's domestic agricultural statistics program

Over 500 reports each year

*120 crop items*

*45 livestock items*

Over 9000 reports at the state level

Agricultural Census every 5 years



## Responsibilities

- ***Headquarters***

- design survey
- develop specifications (content & procedures)
- design questionnaires
- develop instructions
- train field office statisticians
- develop systems/programs

- ***Field Offices***

- maintain lists
- train interviewers
- collect data
- process data
- analyze data
- recommend state estimates



## Responsibilities

- ***Headquarters***

- combine data data to national level
- analyze data
- receive state recommendations

- ***Agricultural Statistics Board***

- set regional & national estimates
- review/reconcile state recommendations
- publish final estimates



## U.S. Farm Definition

### ***Farm:***

any place that produced and sold,  
or normally would have produced and sold,  
\$1,000 or more of agricultural products  
during the calendar year

~ currently about 2.2 million farms ~



## Agricultural Census

### All farms

total area & land use  
irrigation  
land in government programs  
field & forage crops  
fruits, nuts & berries  
vegetables & melons  
horticultural specialties

livestock & poultry  
animal specialties  
aquaculture  
production contracts  
gross value of sales  
direct sales to consumers

government loans  
government program payments  
farm-related income  
grain storage capacity  
operator characteristics  
farm organization

### 20% of farms

fertilizer & chemical use  
farm production expenses  
inventory & value of machinery & equipment  
market value of land & buildings  
farm labor

~ years ending in "2" & "7" ~

*inventories as of December 31 ~ production, sales & other information for calendar year*



## Census Follow On

- Horticultural Census
  - Establishments selling more than \$10,000 of horticultural specialties
- Aquaculture Census
  - Establishments selling more than \$1,000 of aquaculture products
- Farm Ranch & Irrigation Survey
  - Sample of operations reporting irrigation
- Agricultural Economics & Land Ownership
  - Sample of farm operators and landlords