

# Smallholder Land Access Research - Possible Interactions with Natural Resource & GMA Issues

Presentation for Discussion  
at a Planning Meeting of Selected Cooperating Partners  
by  
Michael Weber, Antony Chapoto, Margaret Beaver and Thom Jayne  
FSRP/MSU

ACF Offices, Oct 27, 2009

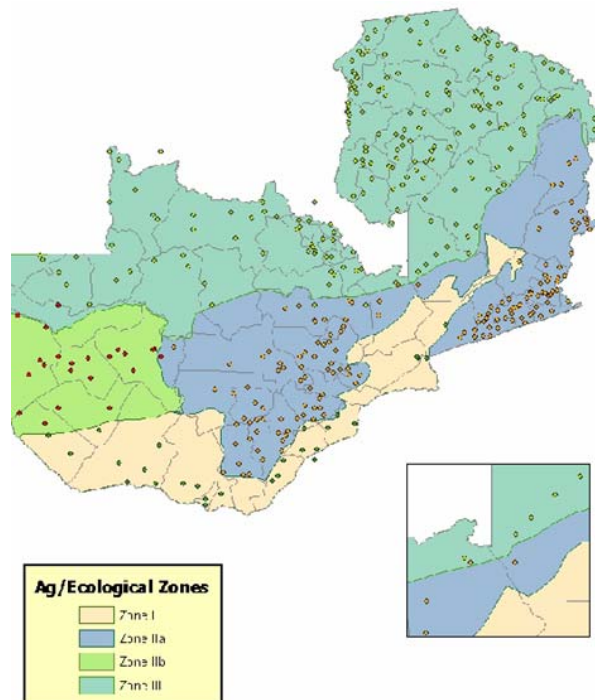
*Research and Outreach Activities Supported By:*

FSRP



The Agricultural Consultative Forum

## Empirical Data on Smallholders in Zambia – Nation Wide Random Surveys



Map of Central Statistical Office Statistical Enumeration Areas (SEAs) Sampled  
in the CSO/MACO/FSRP Post Harvest and Supplemental Surveys in  
2001, 2004 and 2008 by Zambia's Agro-Ecological Zones

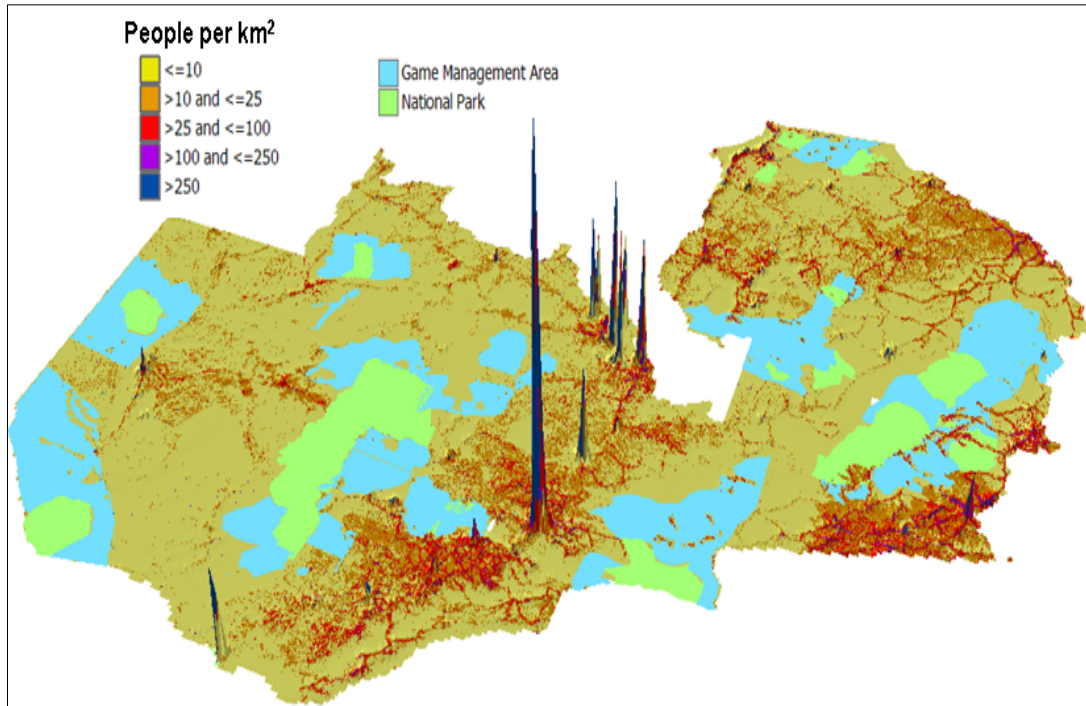
## Points of Potential Interaction

- Significant heterogeneity in access to land both outside & inside game management areas
- Gender – female headed hhs relatively disadvantaged in access to land, both inside and outside GMA's
- Very small farm size for many hhs in all Provinces puts more pressure on need for land intensification
- Farm size decreases in most Provinces over past 10 years
- What explains possible changes in land access in Northern & Southern Provinces suggested by the SS results?
- Local decision making important to access to land
- Relationships between smallholder farm size and hh income from various sources, both inside and outside of GMA's?
- Others?

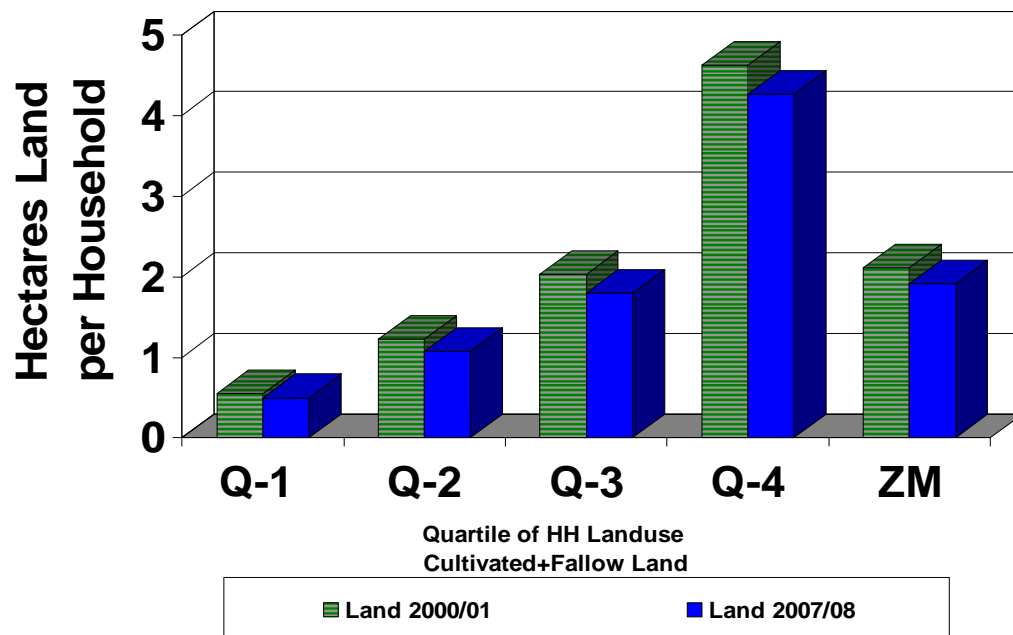
## Farmer Respondent Perception of Unallocated Land Available Locally

- Positively Related Factors
  - amount of land (small effect) & other assets
  - kinship relations to local headman
  - distance from roads & district towns
- Negatively Related Factors
  - female-headedness
  - proximity to towns & markets
  - duration of settlement in the area

# Population Density and Distribution Zambia 2007

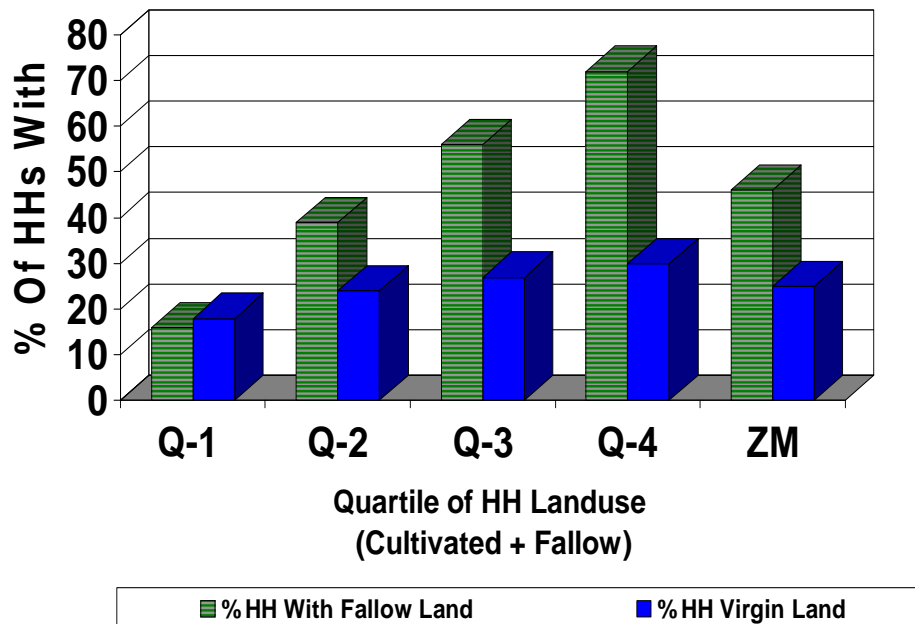


**Figure 3. Comparison of Farm Size (Cultivated + Fallow Fields) For Small & Medium Farmers in Zambia**



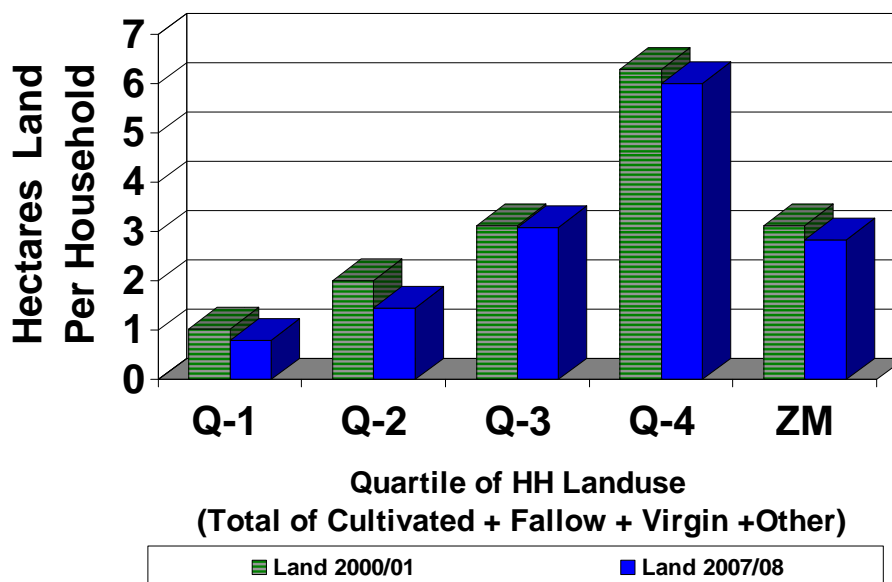
Source: CSO/MACO/FSRP 2000/01 & 2007/08 National-Level Supplemental Rural Livelihood Survey

**Figure 4. Comparison of Small & Medium Farmers With Declared Access to Fallow and Virgin Land in Zambia**



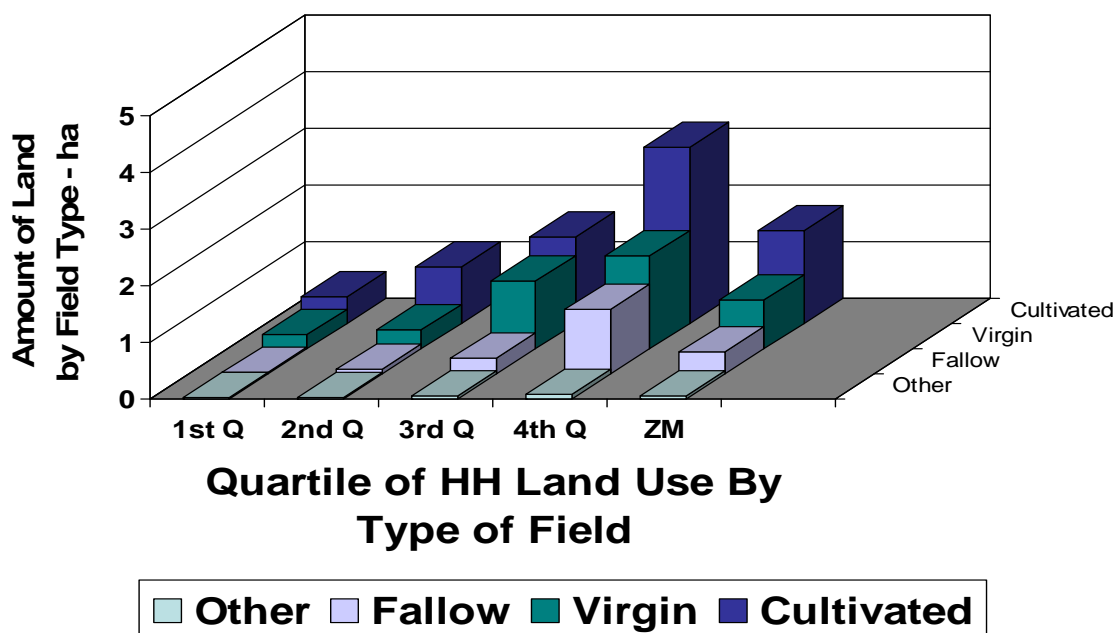
Source: CSO/MACO/FSRP 2000/01 & 2007/088 National-Level Supplemental Rural Livelihood Survey

**Figure 5. Comparison of Total Farm Size (All Fields) For Small & Medium Farmers in Zambia**



Source: CSO/MACO/FSRP 2000/01 & 2007/088 National-Level Supplemental Rural Livelihood Survey

## 2007/2008 Small & Medium-Scale Farmers - Amount and Type of Land By HH Land Quartile



## Large Negative Changes From 2000/2001 to 2007/2008 – Why?

Province and Farm Size Definition	Quartiles of Landholding Size Per Household				Mean
	1 <sup>st</sup> Quartile bottom 25%	2 <sup>nd</sup> Quartile	3 <sup>rd</sup> Quartile	4 <sup>th</sup> Quartile top 25%	
-----Hectares per household where applicable-----					
<b>2000/2001 Marketing Season Survey</b>					
Northern - cultivated + fallow - ha	.70	1.67	2.70	5.69	2.70
-hh with fallow fields - %	35 %	69 %	71 %	87 %	66 %
-hh with virgin land - %	54 %	75 %	72 %	77 %	69 %
-Northern all land - ha	2.41	4.83	6.44	11.58	6.33
<b>2007/2008 Marketing Season Survey</b>					
Northern - cultivated + fallow - ha	.41	.95	1.56	3.41	1.58
-hh with fallow fields - %	4 %	13 %	23 %	43 %	21 %
-hh with virgin land - %	11 %	16 %	18 %	27 %	18 %
-Northern all land - ha	.71	1.70	3.56	5.74	2.95

## Large Positive Changes From 2000/2001 to 2007/2008 – Why?

Province and Farm Size Definition	Quartiles of Landholding Size Per Household				Mean
	1 <sup>st</sup> Quartile bottom 25%	2 <sup>nd</sup> Quartile	3 <sup>rd</sup> Quartile	4 <sup>th</sup> Quartile top 25%	

-----Hectares per household where applicable -----

### 2000/2001 Marketing Season Survey

Southern - cultivated + fallow - ha	.44	1.22	2.38	5.70	2.44
-hh with fallow fields - %	6 %	25 %	53 %	66 %	38 %
-hh with virgin land - %	2 %	0 %	2 %	4 %	2 %
-Southern all land - ha	.54	1.26	2.53	6.35	2.67

### 2007/2008 Marketing Season Survey

Southern - cultivated + fallow - ha	.63	1.54	2.95	7.45	3.11
-hh with fallow fields - %	5 %	27 %	43 %	65 %	34 %
-hh with virgin land - %	8 %	14 %	14 %	28 %	16 %
-Southern all land - ha	.93	2.10	3.77	10.32	4.24



Zikomo Kwambili,  
Natotela sana,  
L'i tumezi ahulu,  
Twalumba kapati,

**Thank you to Zambian smallholders,  
traders, consumers and to policy makers  
for opportunities to obtain/share  
information and ideas – we welcome  
questions and comments**